

☐ OPEN
☐ MEDIUM
☒ TIGHT

☐ HIGH
☒ MEDIUM
☐ LOW

☐ SMOOTH
☐ MEDIUM
☒ BUMPY

FRONT SUSPENSION

☐ IN: _____
TOE ANGLE: ☐ OUT: 1°

RIDE HEIGHT
FRONT: _____

CAMBER: 2°

REBOUND STOP: None

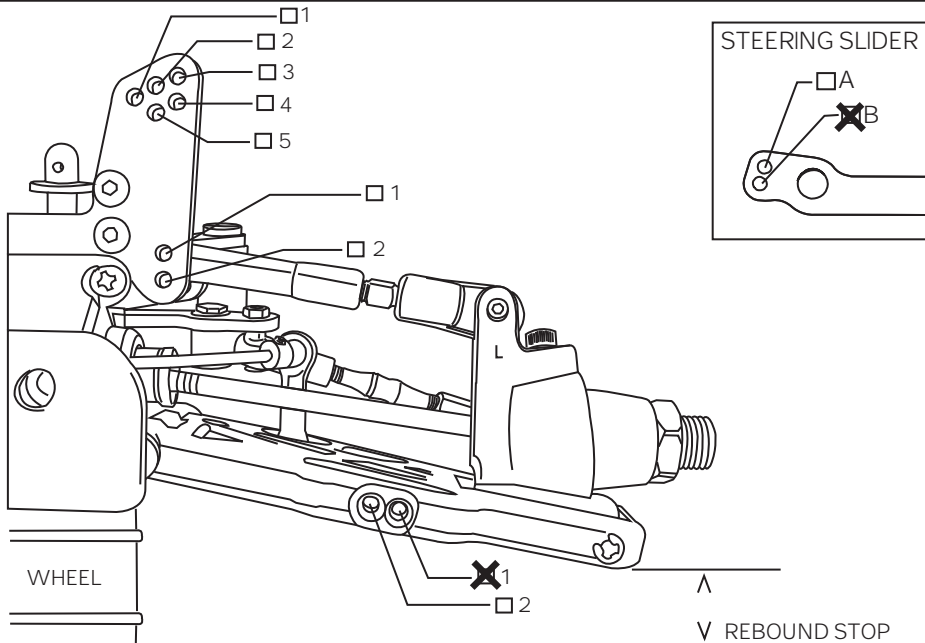
CASTER ☐ 17° ☐ 20° ☒ 22°
SWAY BAR ☒ 2.4mm ☐ 2.6mm

FRONT SHOCKS

OIL: 60

PISTONS: _____ ☐ STANDARD ☒ DRILLED 1.4

SPRING: 40071



NOTES: _____

REAR SUSPENSION

☐ A: _____
TOE ANGLE: ☐ B: _____

RIDE HEIGHT
REAR: _____

CAMBER: 2°

REBOUND STOP: _____

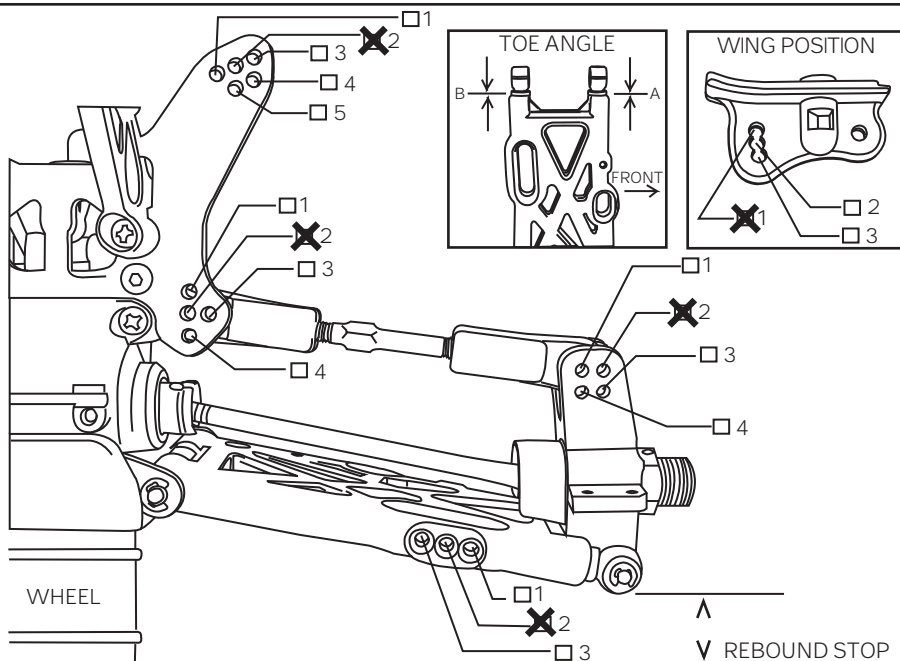
SWAY BAR ☒ 2.8mm

REAR SHOCKS

OIL: 40

PISTONS: _____ ☐ STANDARD ☒ DRILLED 1.4

SPRING: 40071



NOTES: _____

DIFF OIL

FRONT: 3
CENTER: 3
REAR: 1

TIRES

FRONT
TYPE: _____
INSERT: _____

REAR
TYPE: _____
INSERT: _____

ENGINE

TYPE: Rex P-5
GASKET: _____ mm
PLUG: Rex7

MUFFLER: JP-2
FUEL: _____

CLUTCH

CLUTCH BELL ☒ 13T
☐ 14T
☐ OTHER: _____ T

CLUTCH SHOES
☒ 3 SHOE
☐ 4 SHOE