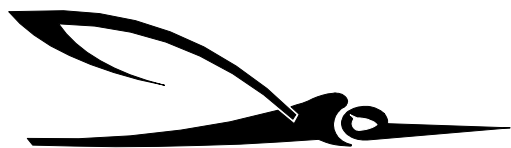




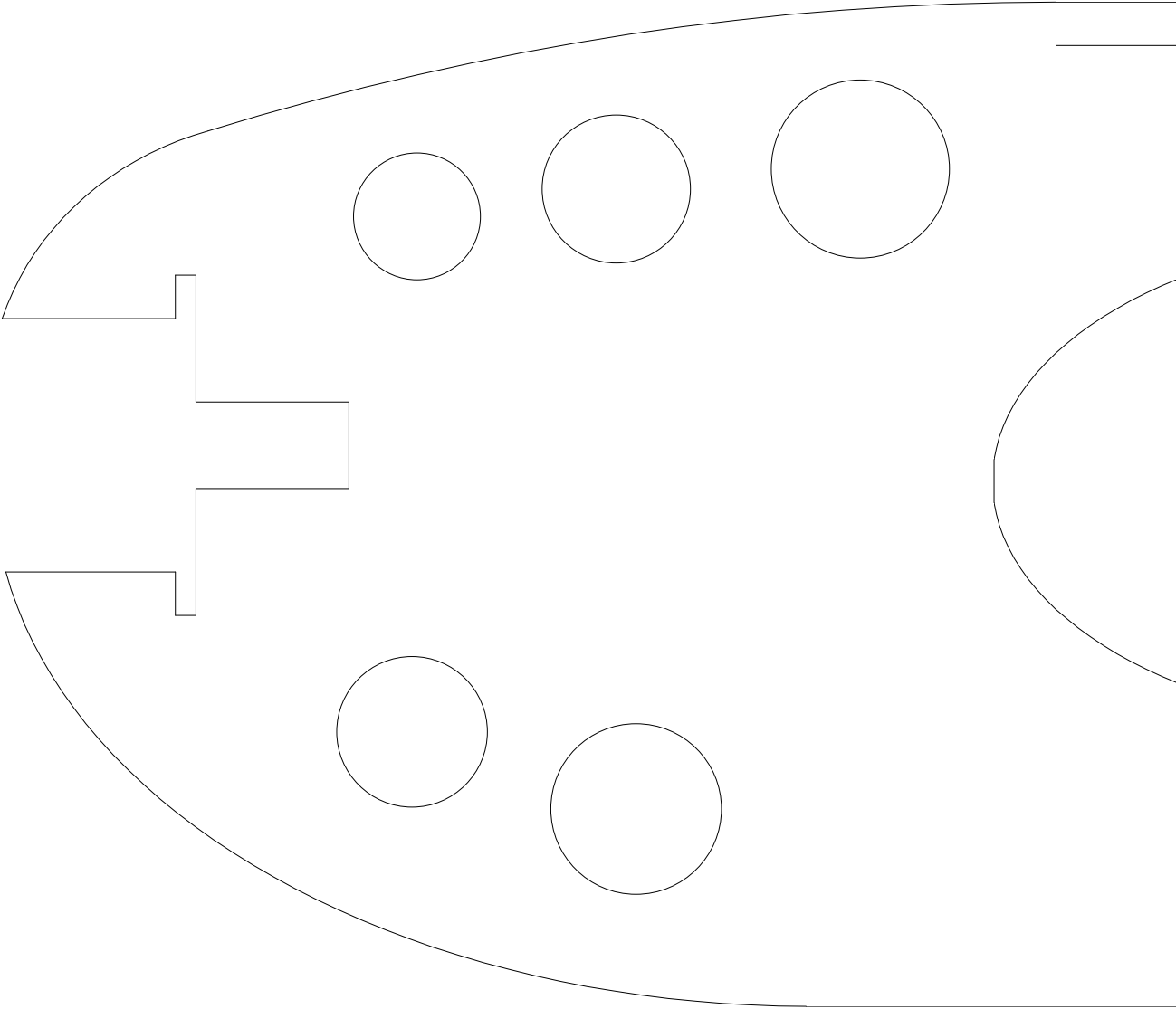
Kalteisen
Aircraft

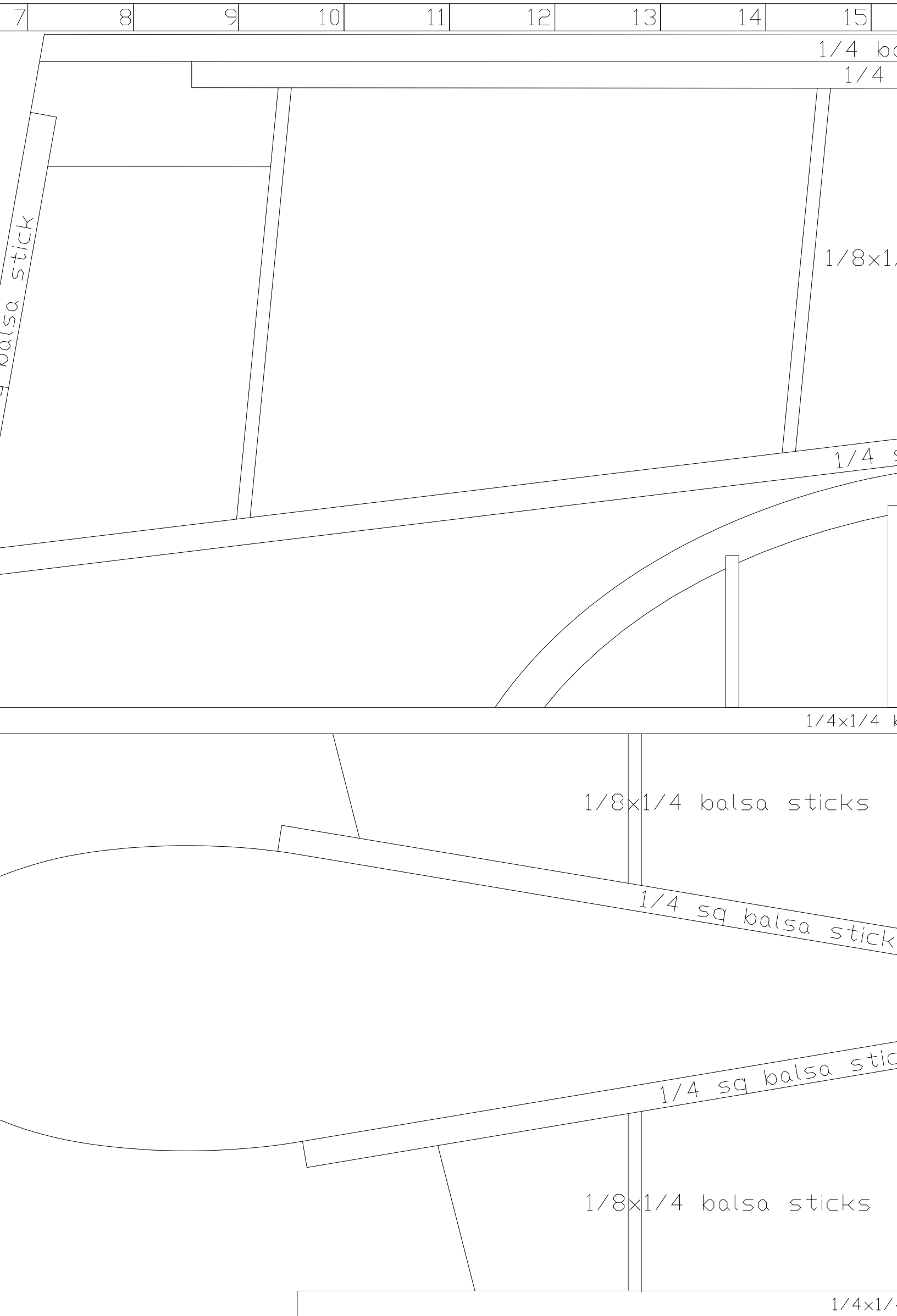


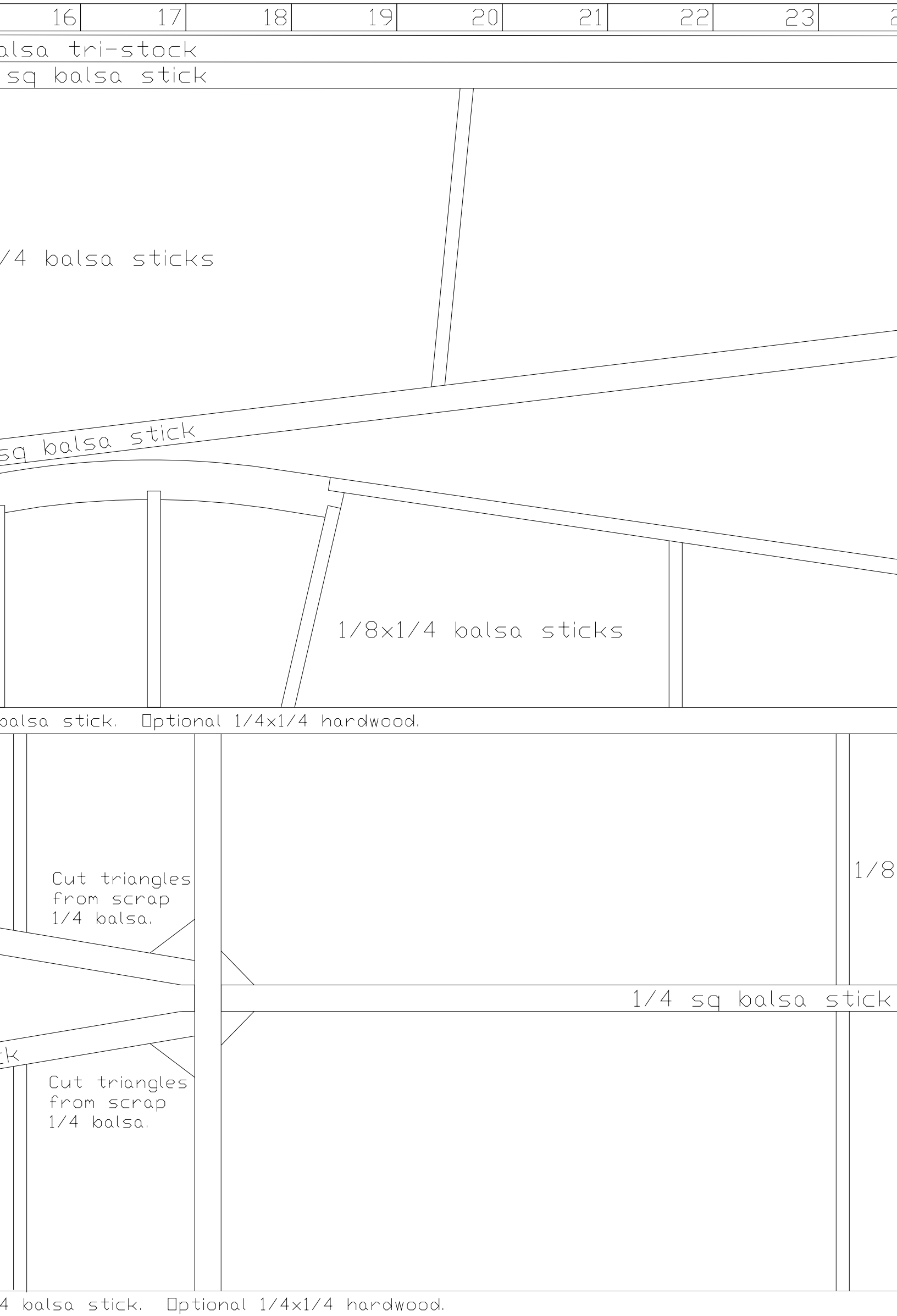
Skeeter 40

version 3
Designed by
Quinn Coldiron
qcoldir@yahoo.com
Span: 40 inches
Weight: 25-35oz
copyright 2009

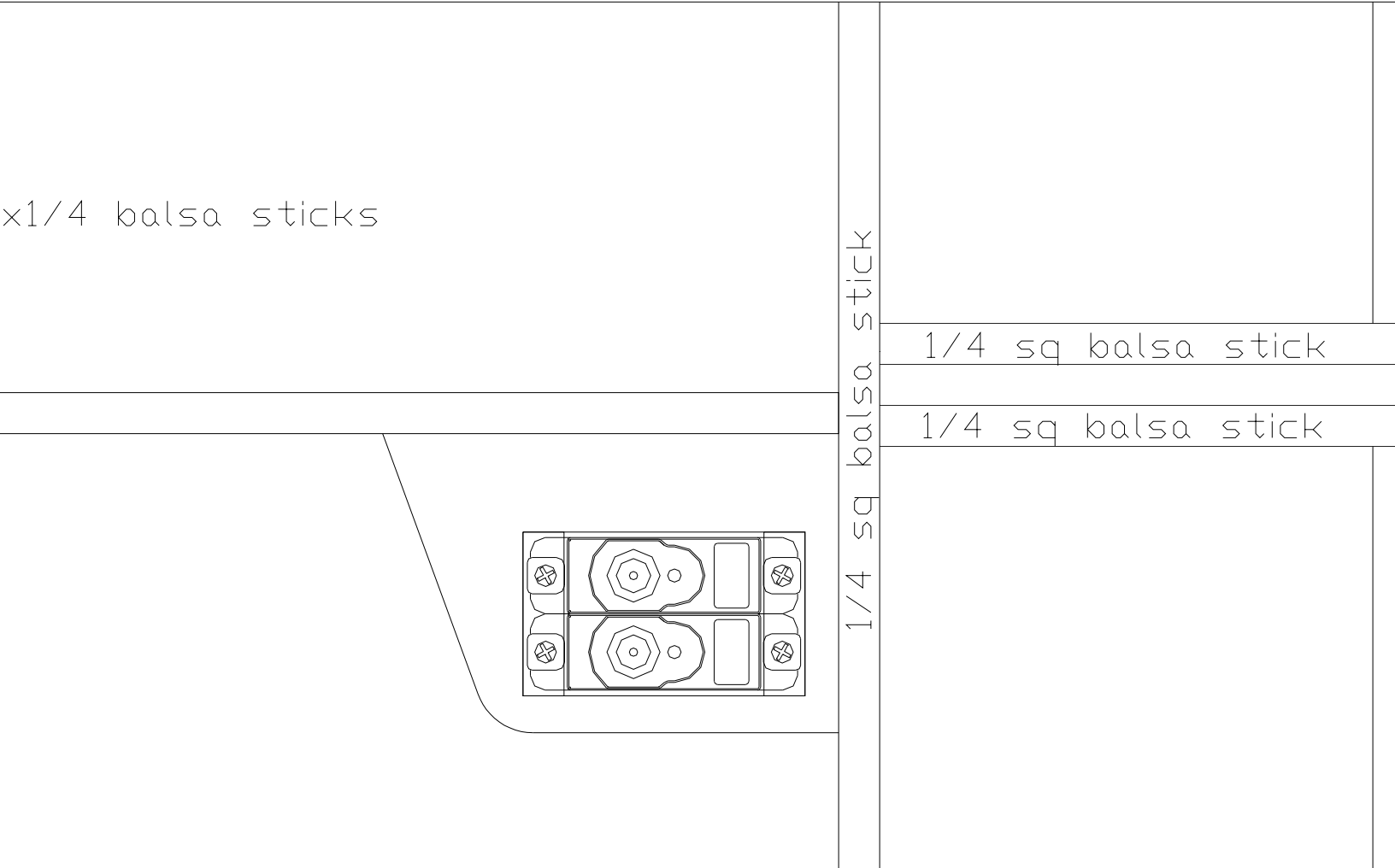
1/4 sq ft

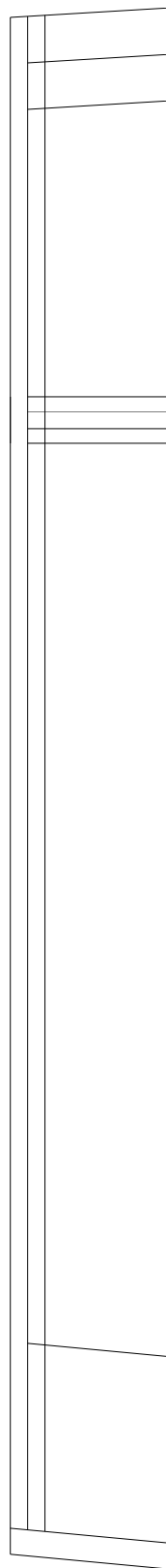
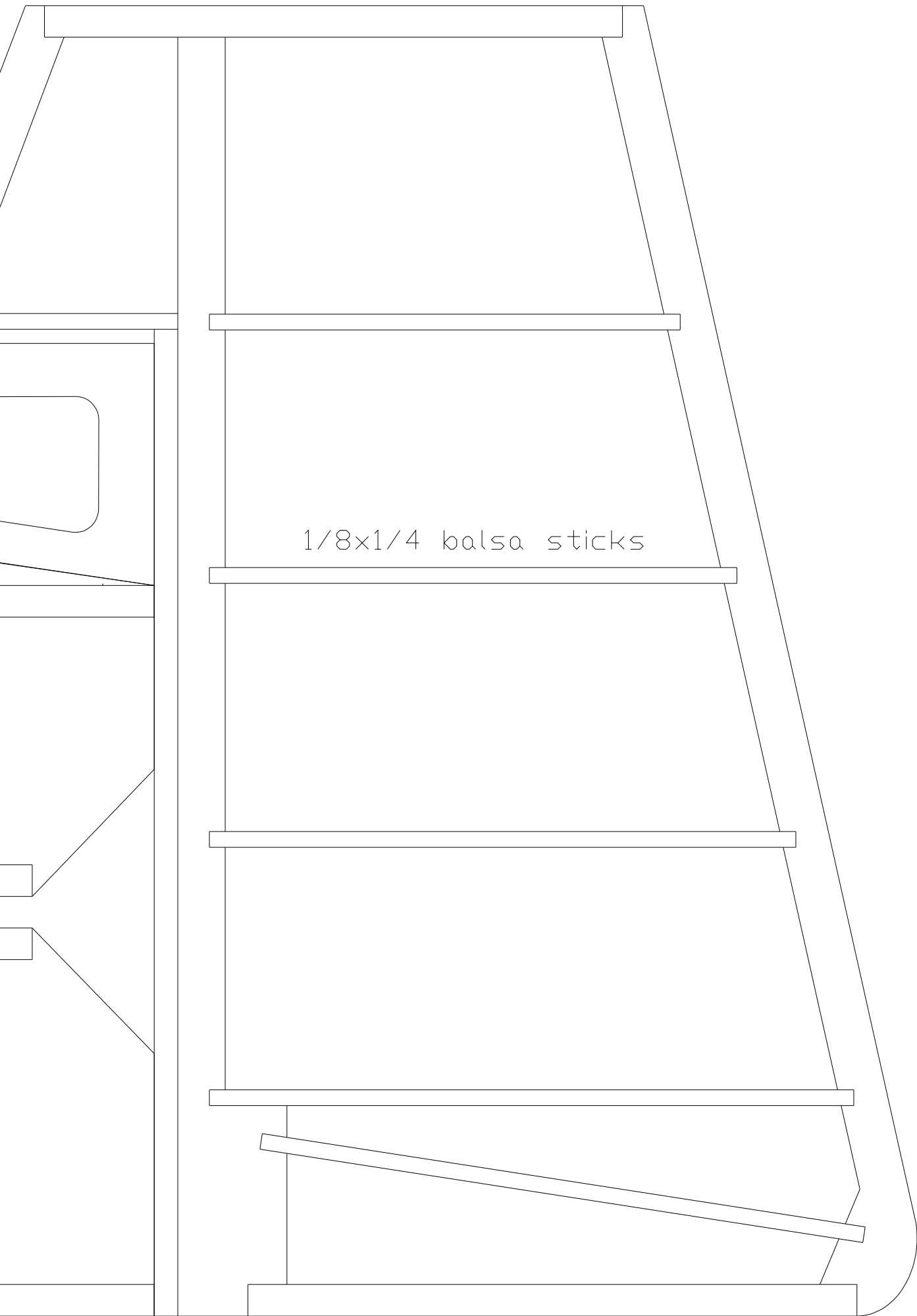






24	25	26	27	28	29	30	31	32
----	----	----	----	----	----	----	----	----

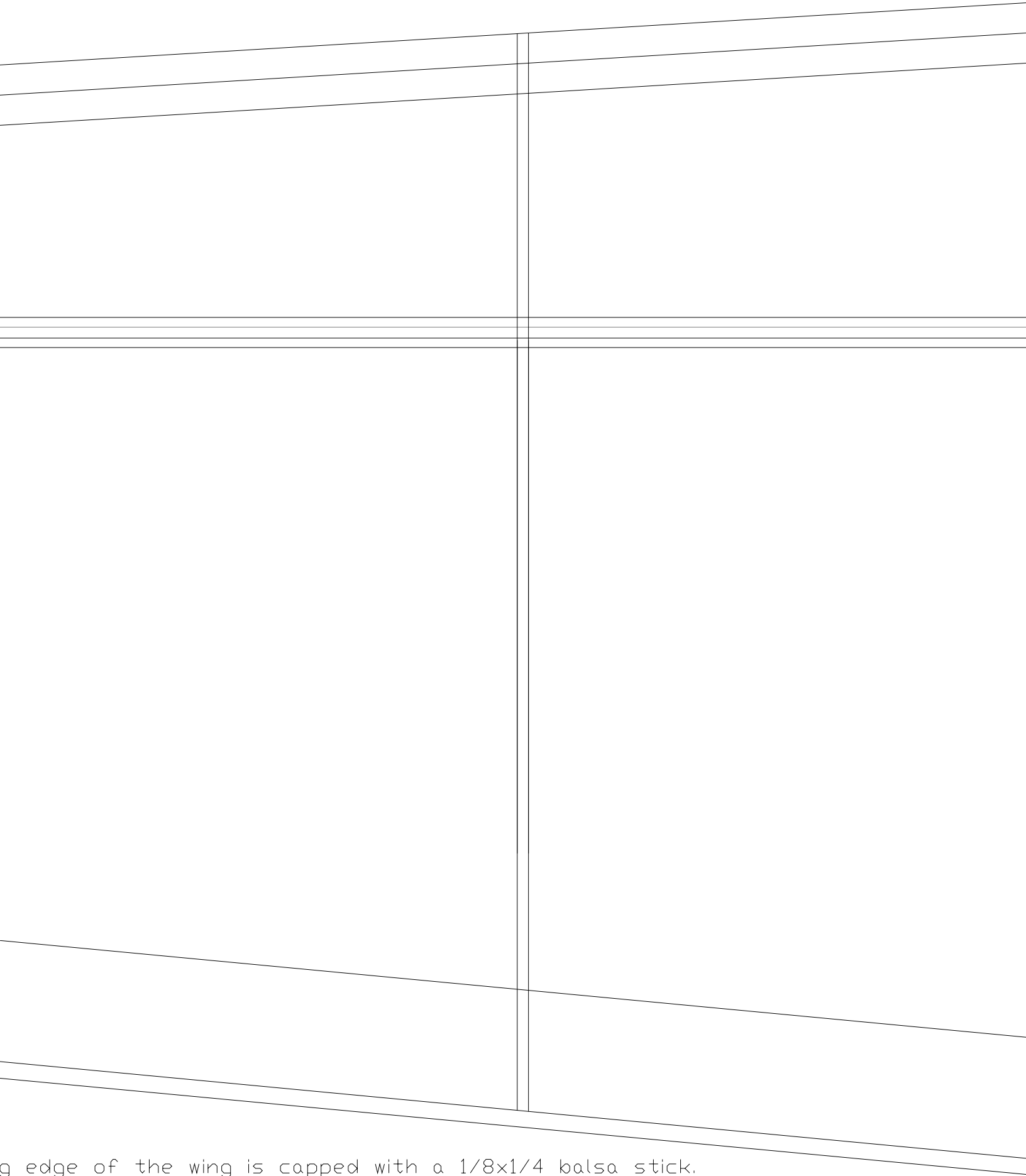




Trailing

41	42	43	44	45	46	47	48	49
----	----	----	----	----	----	----	----	----

The leading edge of the wing is formed by 1st sliding in a 1/8x1/4 stick, then glueing in a 1/4x1/4 stick.

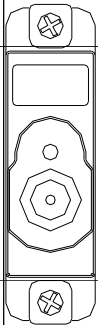


g edge of the wing is capped with a 1/8x1/4 balsa stick.

1/4x1/4 balsa

1/8x1/4 balsa

Spars are capped on top and bottom
with 1/8x14 balsa sticks.

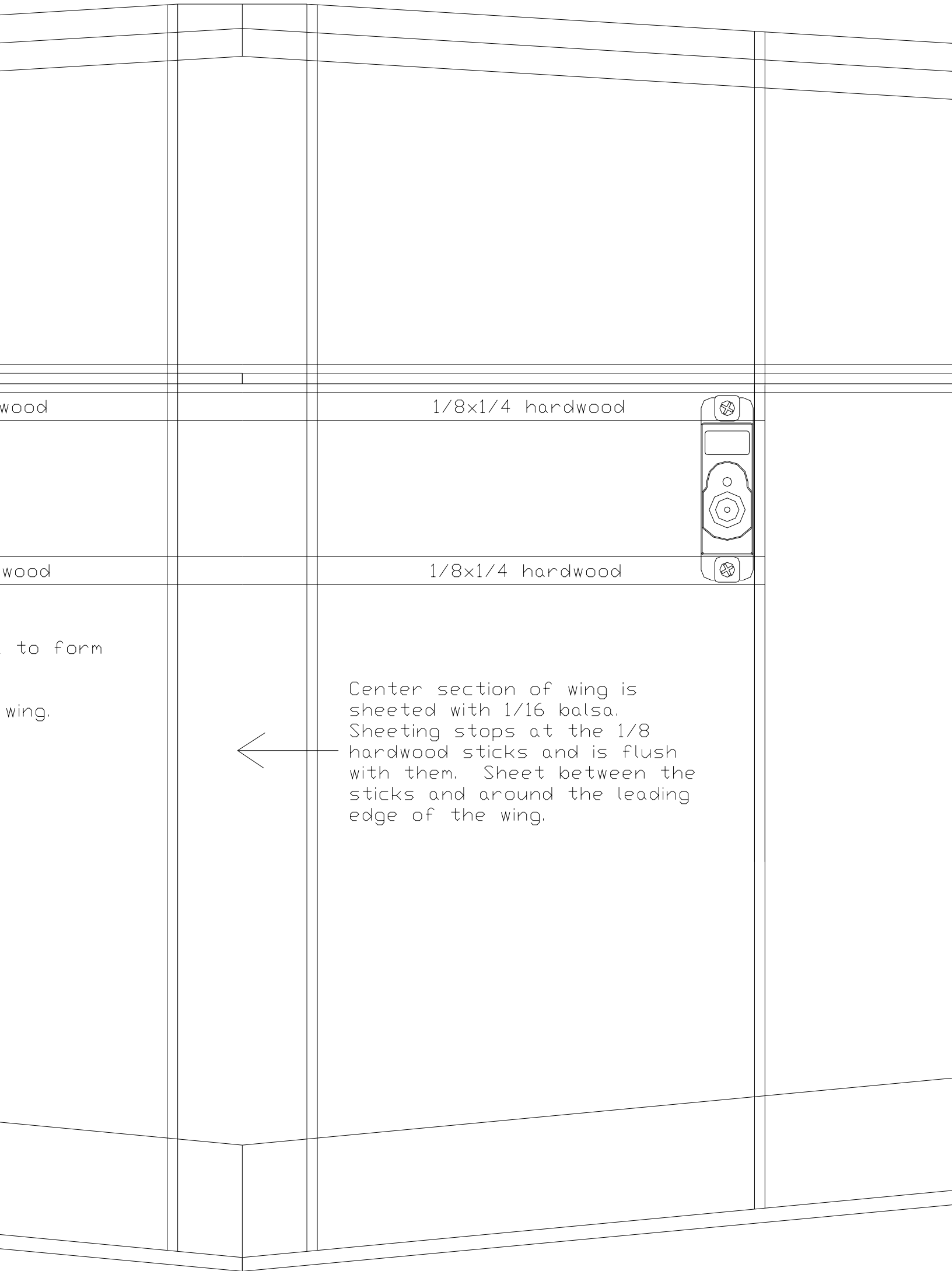


1/8x1/4 hard

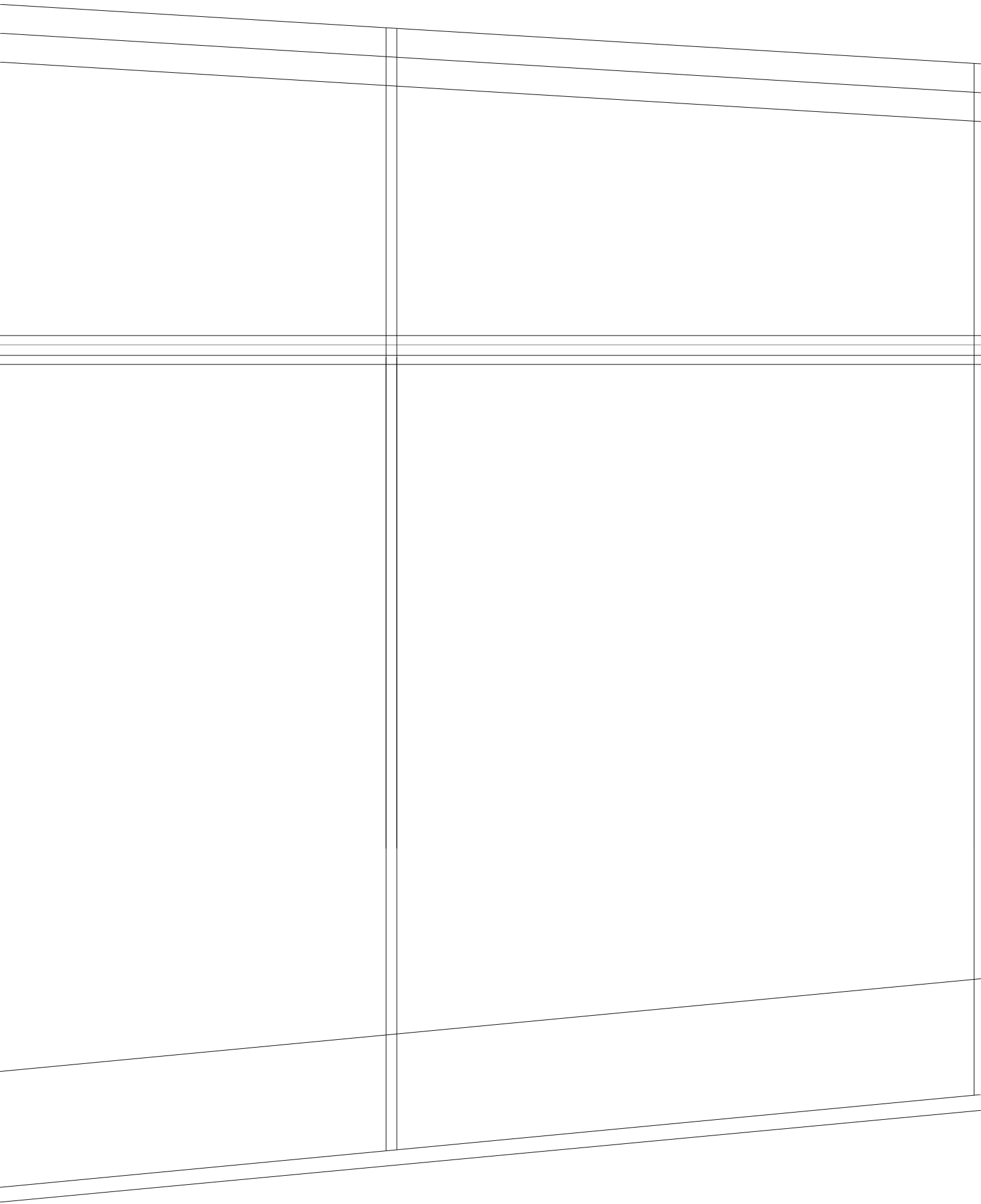
1/8x1/4 hard

Box with 1/16th balsa
radio box in wing.

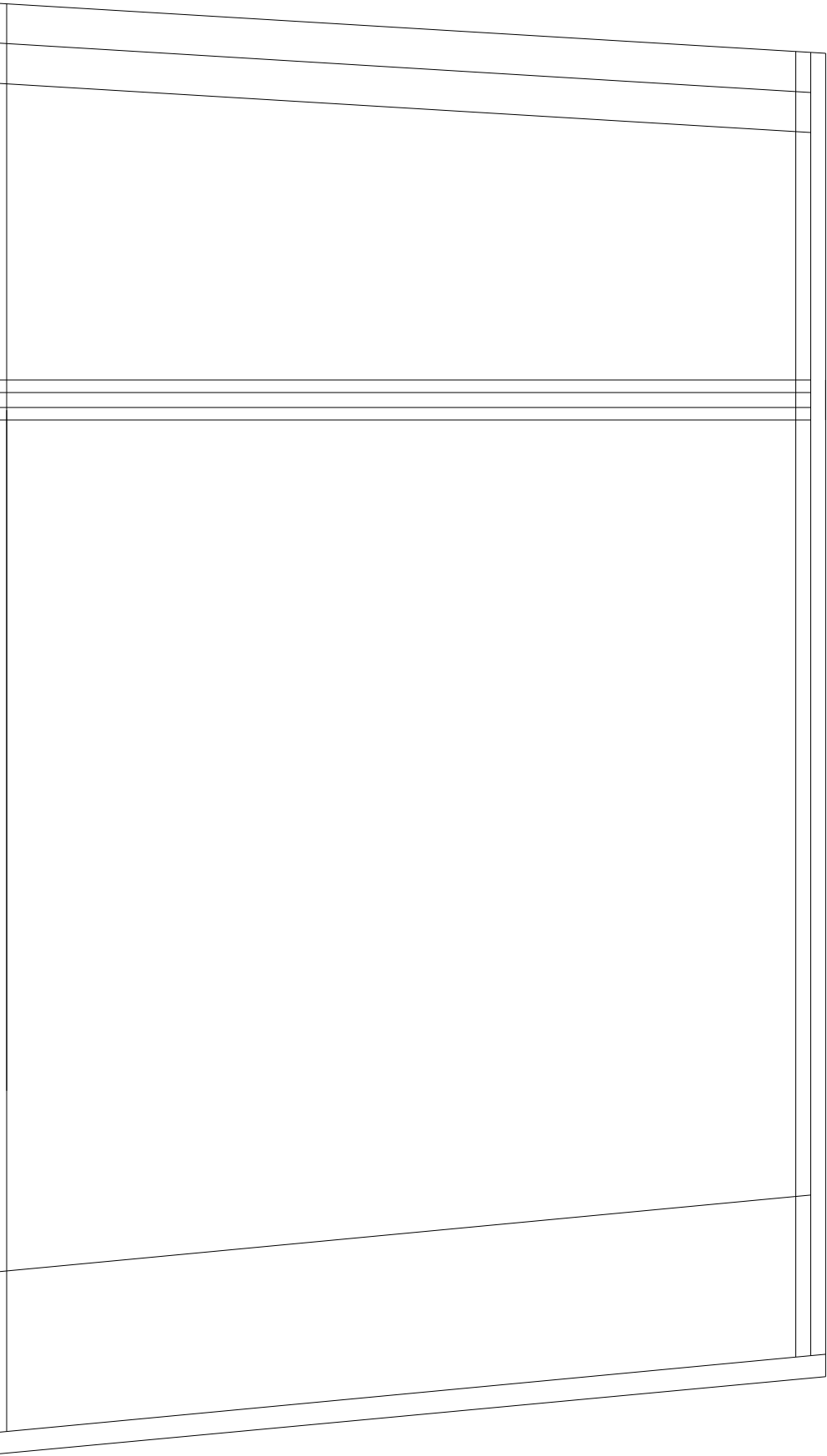
Do on both sides of

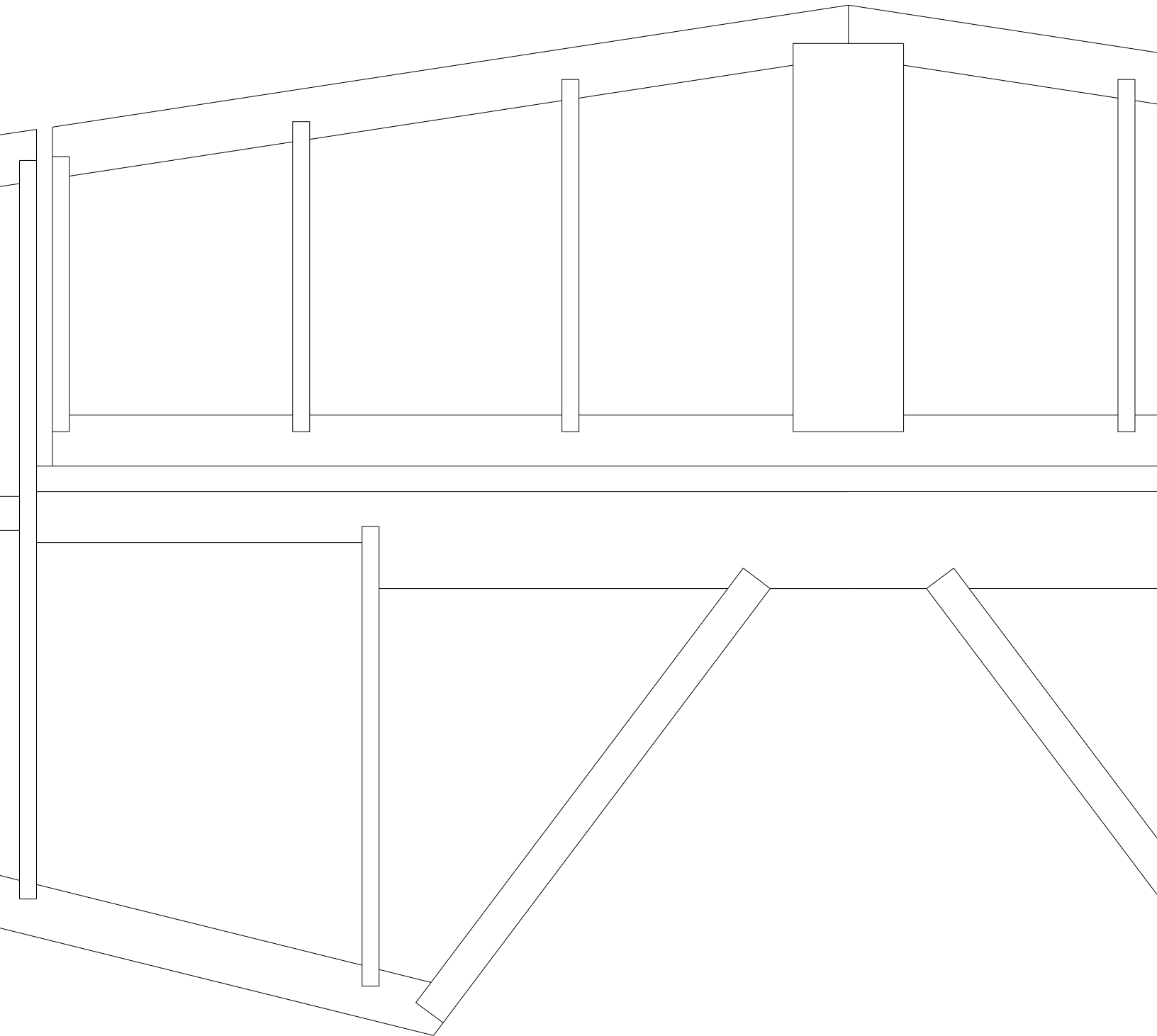


67	68	69	70	71	72	73	74	75
----	----	----	----	----	----	----	----	----



75	76	77	78	80	81	82	83	84
----	----	----	----	----	----	----	----	----





93	94	95	96	97	98
----	----	----	----	----	----

