

INTERPLANE STRUTS DRILLED TO ACCEPT HORIZONTAL WIRE. ALL WIRES SOLDERED AT CROSS JOINTS

PULLEY & HOUSING

(A) ANEMOMETER (AIR SPEED INDICATOR)

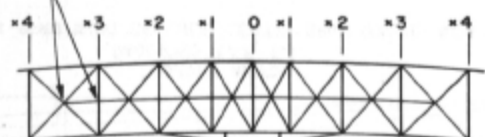
(B) RADIATOR HEADER TANK

LAUNCHING RAIL GUIDE (MOTORCYCLE BALL BEARING HUB)

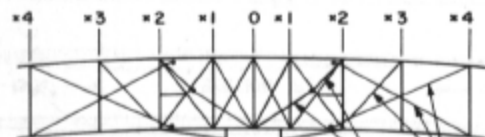
0 1 2 3 4 5 6 FEET

1 2 METERS  
SCALE BARS

RUDDERS COVERED ON OUTSIDE SURFACE ONLY



WIRE TRUSS FRONT STRUTS RIDGED ASSEMBLY



WIRE TRUSS REAR STRUTS FLEXIBLE ASSEMBLY TO ALLOW WARPING

PROPELLER STAY WIRES

WING WARP WIRES



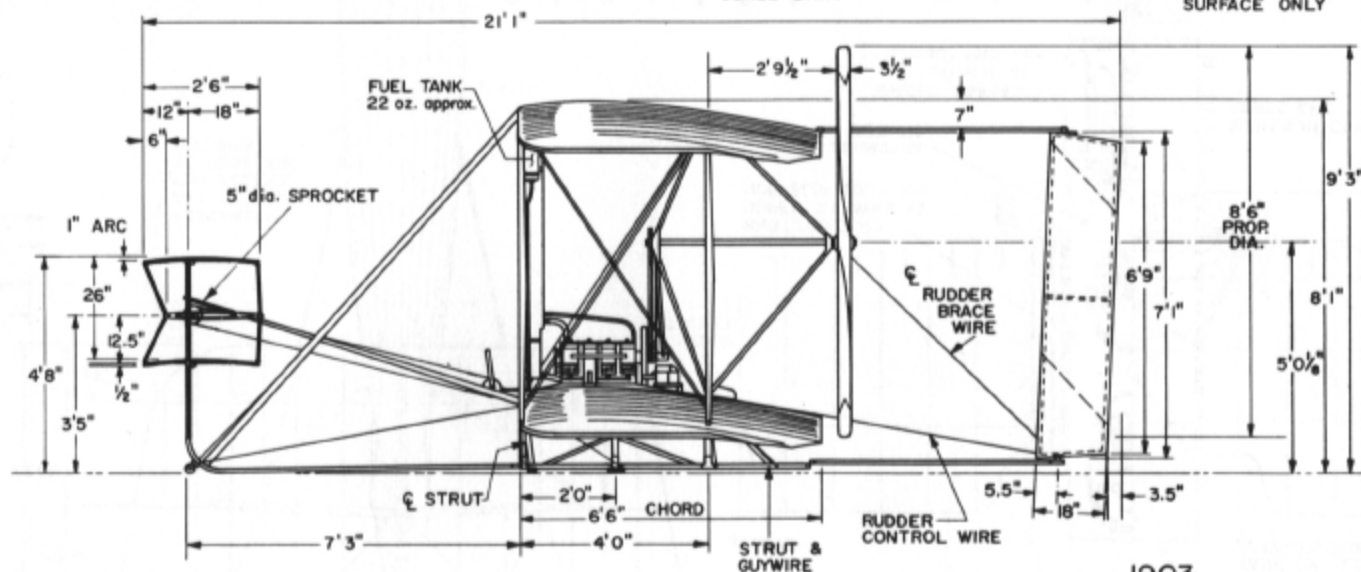
WIRE TRUSS ELEVATOR



STA. 1 STA. 2 STA. 3  
LONGITUDINAL WIRE TRUSSING

#### COLORING NOTES

FABRIC, UNBLEACHED, UNDOPE MUSLIN (OFF WHITE)  
EXPOSED ASH & SPRUCE, CLEAR VARNISHED  
ENGINE & METAL FITTINGS, FLAT BLACK  
PROPELLERS, MEDIUM GRAY



1903  
WRIGHT BROTHERS  
"FLYER"

SCALE: 1:48  
DRAWN & RESEARCHED BY:  
HERB. KELLEY

© PAUL R. MATT 1966  
HISTORICAL AVIATION ALBUM