



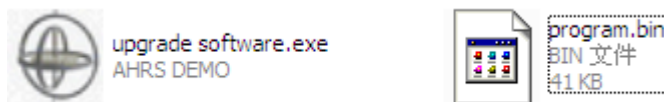
Feiyu Tech Firmware Upgrade Procedure

WARNING – Before firmware upgrading:

- A) Remove the controller module from all connections (Remove ESC/RC wires).
- B) Do not disrupt the Firmware uploading process (e.g. moving your laptop resulting in lost connection). Disrupting the process can damage your controller module processor.
- C) If you are using a portable computer, make sure you have enough power to carry through the updating process. This is to prevent B) above.
- D) Follow the steps below **EXACTLY CHRONOLOGICALLY**.
If you skip any step, firmware upgrade will fail.

THE PROCEDURE

STEP 1: Download the software onto your desktop. Download both the firmware upgrade program and the require firmware (.bin file) :



DO NOT OPEN THE FIRMWARE PROGRAMM YET.

STEP 2: If you have not done so, please install the USB TTL Cable driver from FY websites. The computer **will not** recognize the USB TTL Cable if the proper driver is not installed.

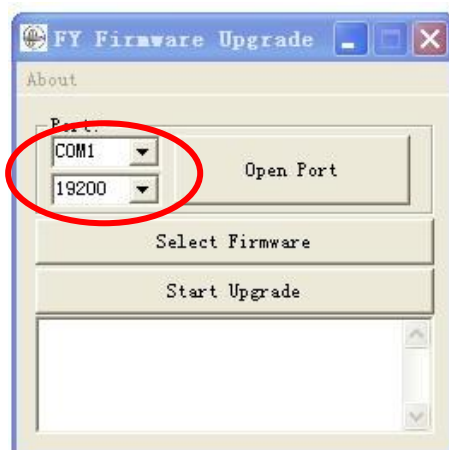
STEP 3: Connect the USB-TTL cable to the computer. **Note – do not connect the controller module yet.**



STEP 4: Open the FY Firmware program:

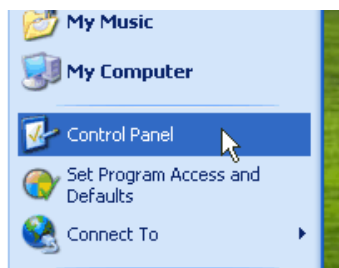


STEP 5: Select the right Com port number, and select 19200 as the baud rate.

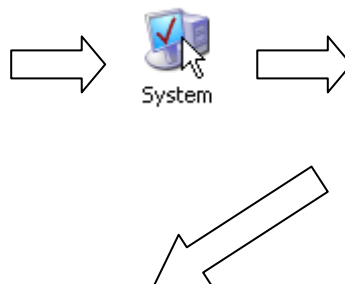


1. If you do not know which COM port number, do the following:

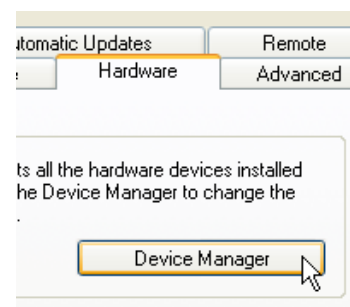
Click your control panel:



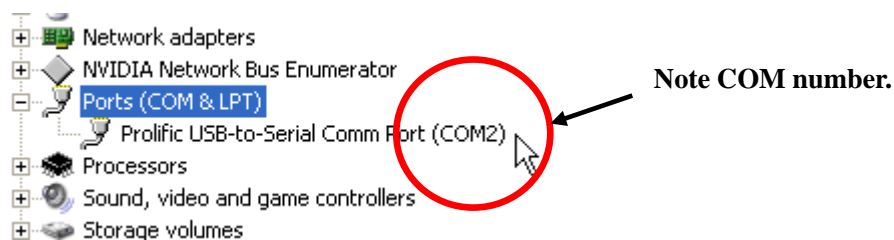
Click on system:



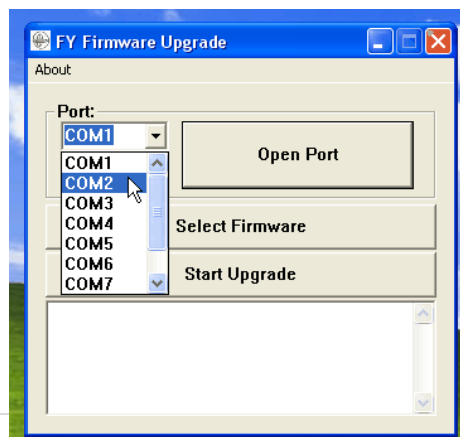
Hardware, click Device Manager:



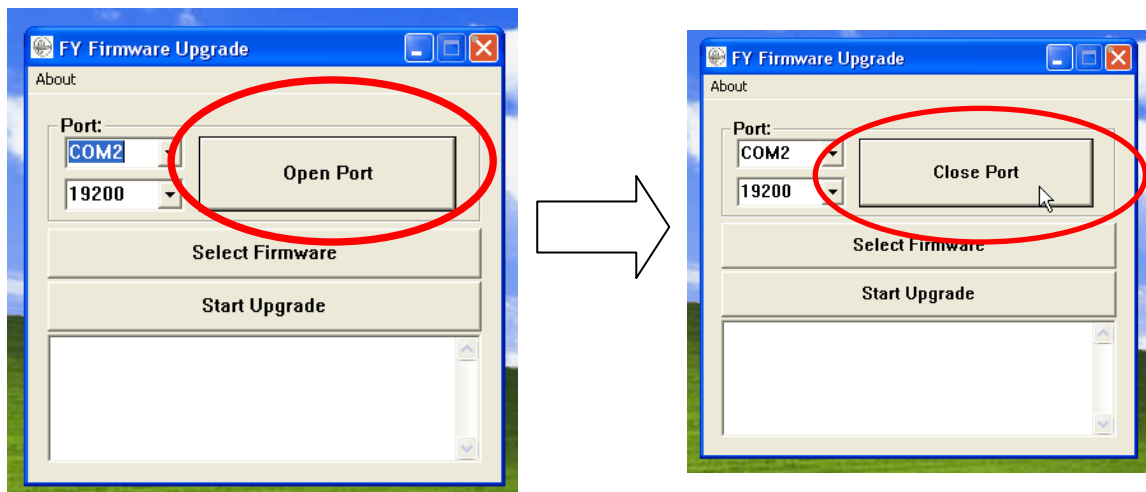
Check the COM Port number for Prolific USB-to-Serial Comm Port:



Select the above COM number onto your Firmware upgrade program:



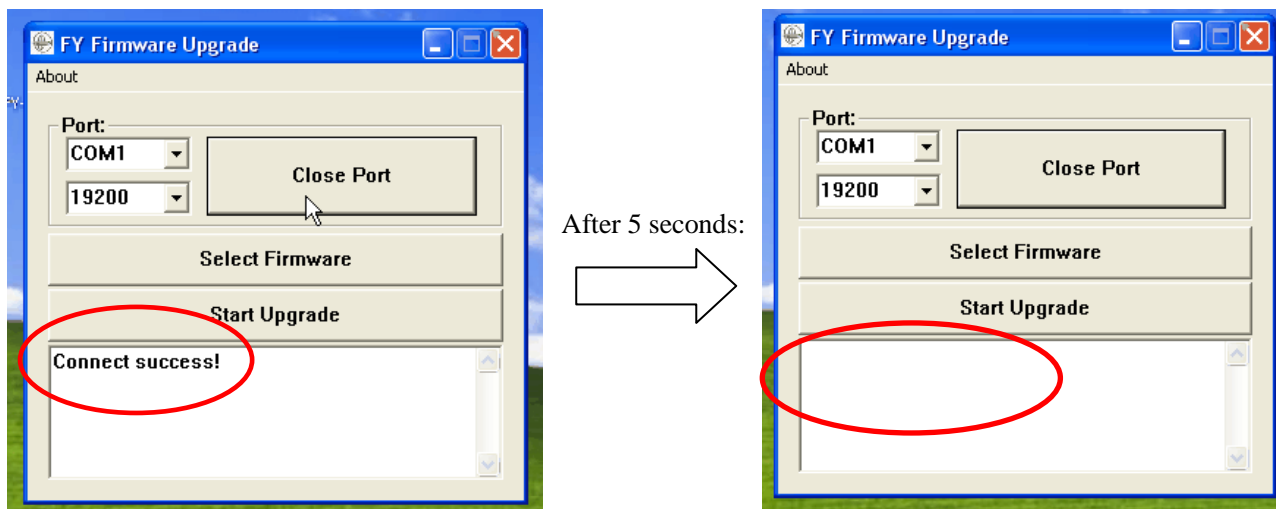
STEP 6: Click “Open port” button. If the COM port is right, the word “Open Port” will change to “Close Port”. Check your COM port number again if this fails.



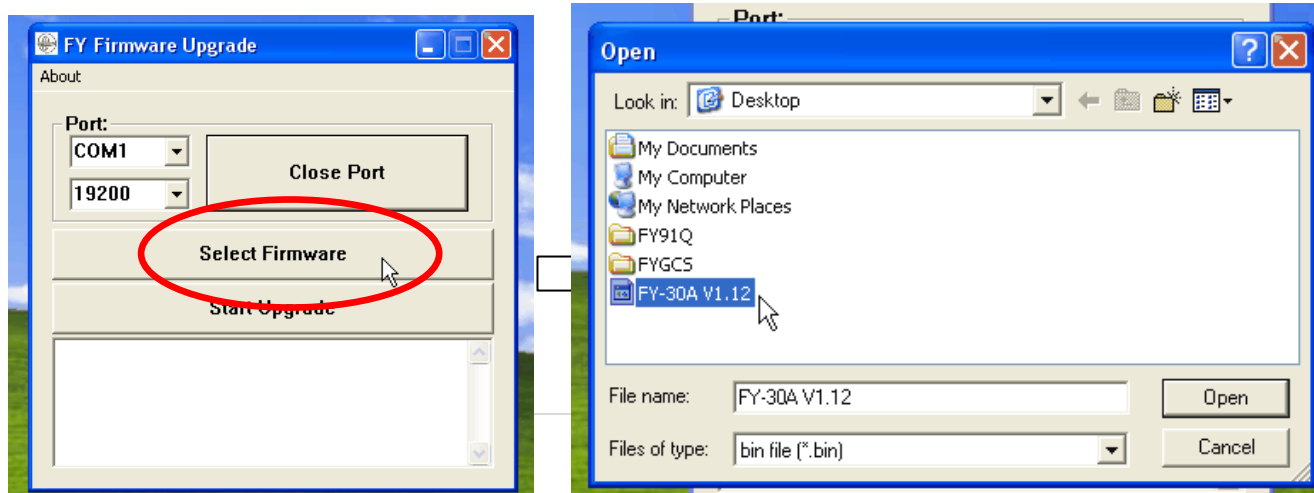
STEP 7: Plug the Serial connector to the controller module [-,+ ,UART] port.

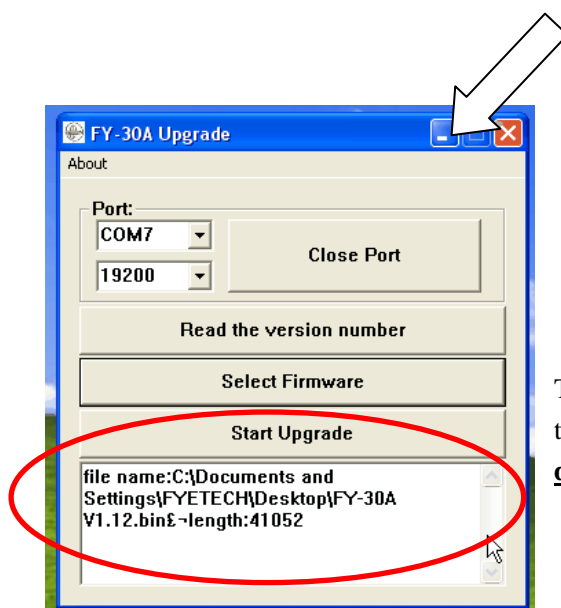
Please ensure the polarity of your wires is correct. **The RED wire is “+”. Wrongly connecting the polarity will damage your controller module.**

2. After plugging, you will see “**Connect success!**”. If connection is not successful, go back to **STEP 1** (repeat):



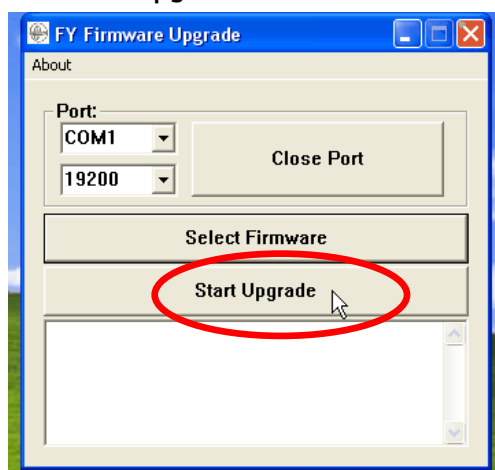
STEP 8: Select the firmware to be uploaded:





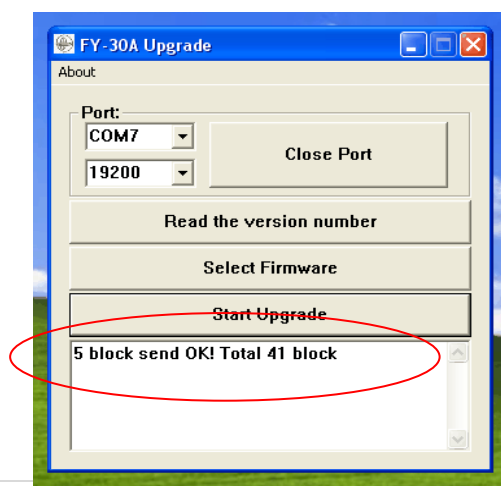
The firmware will be noted on the screen. **This note will disappear after 5 seconds.**

STEP 9: Press the Start Upgrade button:

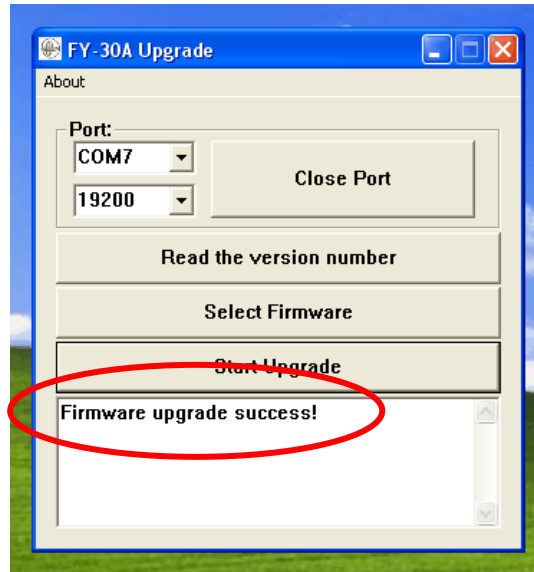


3. Immediately after pressing 'Start Upgrade', the software will show blocks of firmware being sent to the controller module.

DO NOT DISRUPT THIS PROCESS. DOING SO WILL DAMAGE YOUR controller module.



4. After completion of the firmware upgrade, the software will show successful upgrade:



5. Unplug the controller module. Label the Version that you have uploaded and test fly the new firmware.

---END---