

## CASTLE DRIVER'S ED



## Castle Creations

:

.



## Castle Creations, Inc.

Castle Link  
Castle Link

- 1. / (Brake/Reverse Type)
- 2. (Brake Amount)
- 3. (Reverse Amount)
- 4. (Punch/Traction Control)
- 5. (Drag Brake)
- 6. (Dead Band)
- 7. (Cutoff Voltage)
- 8. (Motor Timing)
- 9. (Motor Type)

:

,

, ,

.

.

.

,

!

(ESC),

.

,

,

,

,

.

.

Castle

30

,

5

,

,

.

- 1. .
- 2. .
- 3. 3 3 .
- 4. CH2 .
- 5. , .
- 6. .
- 7. , .
- \* .

\*

\* .

\* .

!

, ,

Castle , , .

, ,

, ,

( , ) USB Castle Link Mamba Max.

, Castle Link, !

, ,

Castle.

, ,

, , .

, ! :

, .

, !

" " , .

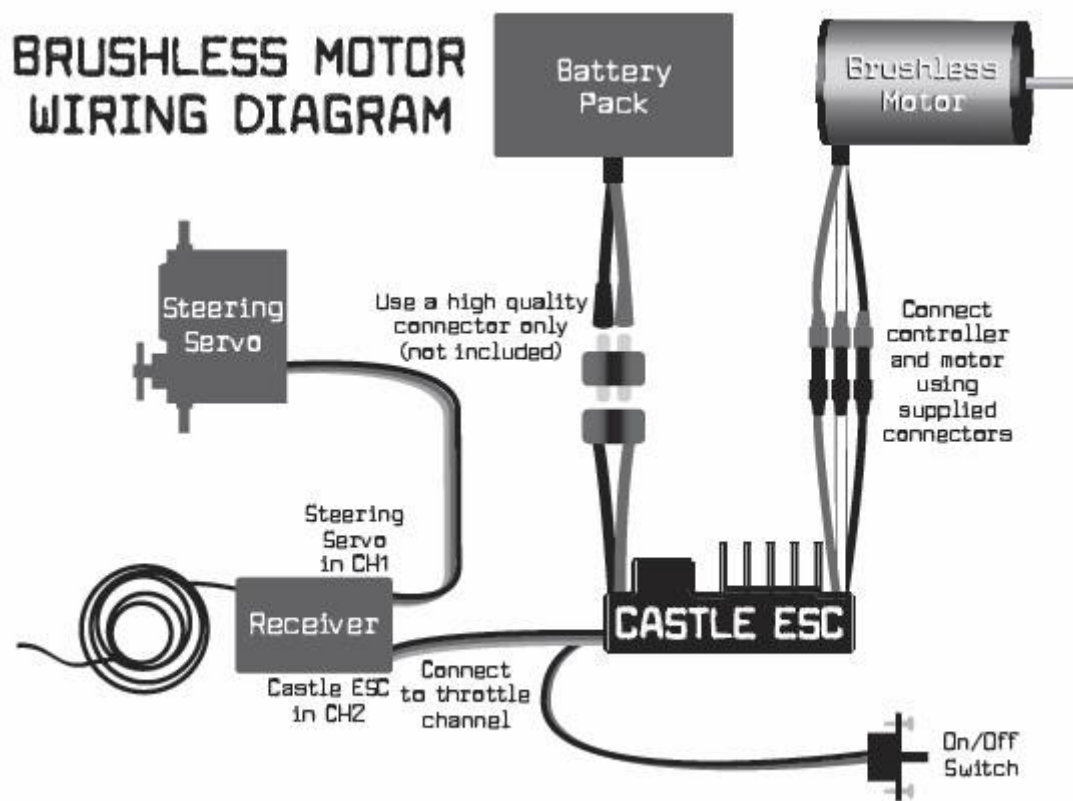
, .

, CC Bullets , Deans Ultra.

Castle ,

. 40-100 , CC

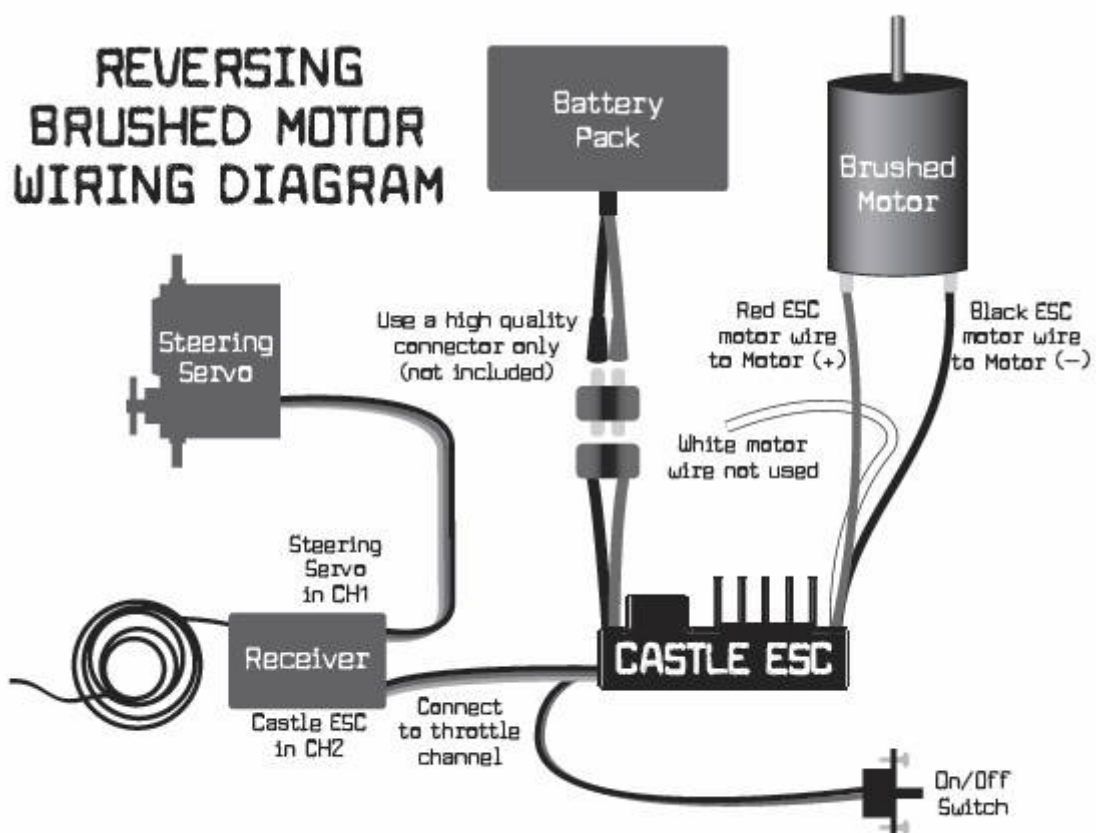
Bullets, Deans Ultra Astro Flight Zero Loss.



*Figure 1: Brushless Motor Setup*

1:

Castle Creations CM36.



*Figure 2: Reversing Brushed Motor Setup*

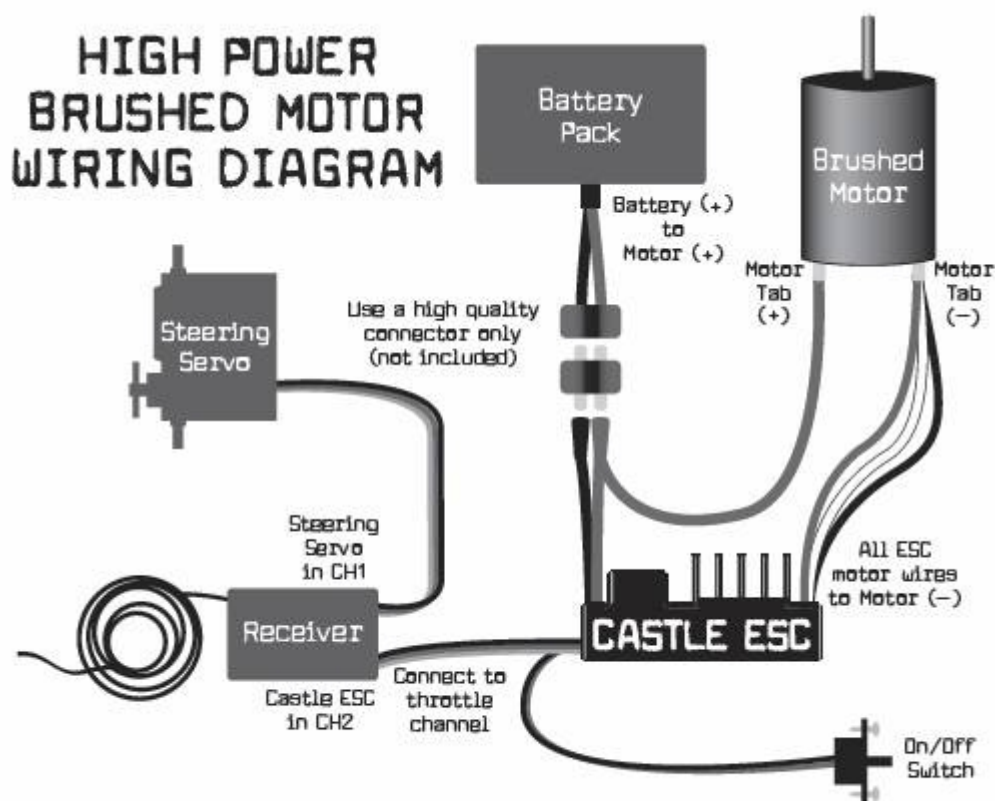


Figure 3: High Power Brushed Motor Setup

3:

Castle  
Castle

5

2.

Castle

Castle ,

Castle Link.

**Futaba**

**Futaba OEM,**

**REVERSE (Rev).**

Castle,  
"ON" -

**1:**

ESC

**2:**

Castle.

**3:**

ESC.

ESC





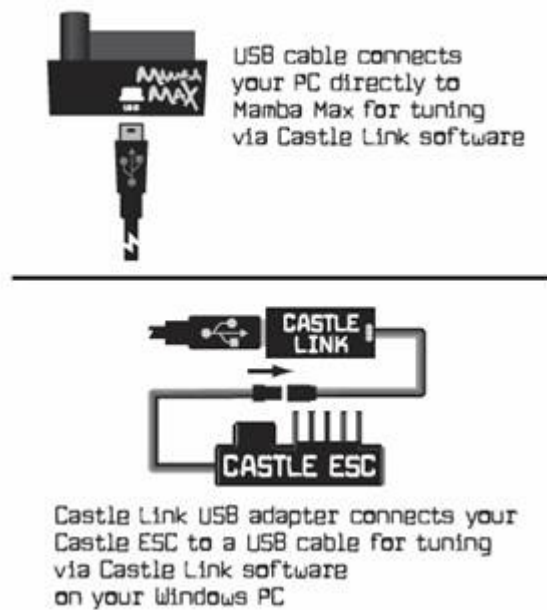
Mamba Max ESC  
 Castle Link.  
 Castle Link ( USB CD-  
 Castle  
 ).

Castle Link  
 .  
 ,  
 Castle Link  
 (drag brake),  
 (PUNCH CONTROL)  
 .  
 ,  
 ,  
 Castle!  
 ,  
 Castle

## Castle Link

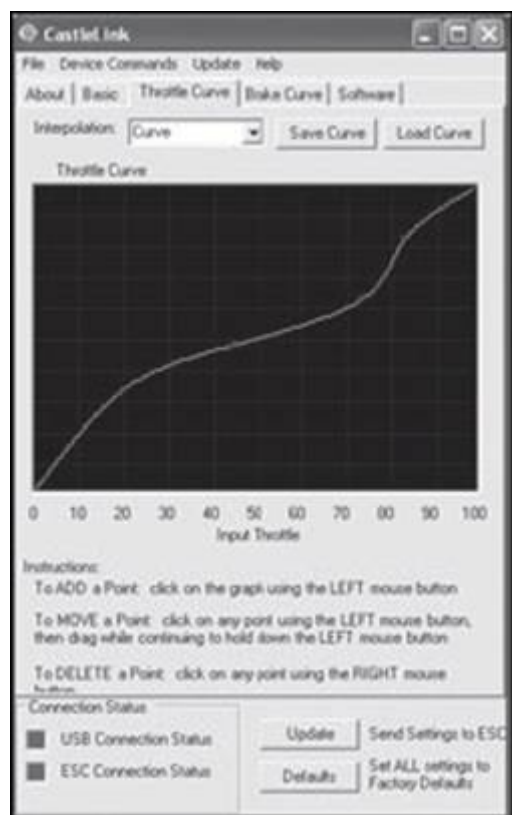
Mamba Max  
 ,  
 ,  
 USB  
 USB  
 Castle Link.  
 Mamba Max.  
 Castle USB  
 Castle Link ( )  
 Castle Link.  
 USB

## CASTLE LINK CONNECTIONS





Castle Link      Mamba Max.



Castle

Castle.

Castle

!

1:

2:

3:

(Reverse Lockout)

(Reverse Type).

Castle

Castle Link.

1. / (Brake/Reverse Type)

1: (Reverse Lockout) ( )

2: / (Forward/Brake Only)

3: / / (Forward/Brake/Reverse)

( )

2. (Brake Amount)

1: 25%

25%

2: 50%

( )  
50%

3: 75%

75%

4: 100%

3. (Reverse Amount)

1: 25%

25%

2: 50%

( )  
50%

3: 75%

75%

4: 100%

4. (Punch/Traction Control)

100%

1: (High)

2: (Medium)

3: (Low)

4: (Lowest)

5: ( )

5. (Drag Brake)

1: (Drag Brake OFF) ( )

2: (Drag Brake) 10%

3: (Drag Brake) 20%

4: (Drag Brake) 30%

5: (Drag Brake) 40%

6. (Dead Band) ( !)

" "

- 1: - 0,1500
- 2: - 0,1000 ( )
- 3: - 0,0750
- 4: - 0,0500
- 5: - 0,0250

7. (Cutoff Voltage)

(LiPo  
(NiCd/NiMH ).

**1:** (None) ( )

**LiPo !**

: 6-8 NiCd NiMH.

**NiCd NiMH .**

, **ESC,**  
**LiPo !**

**2: Auto-Lipo**  
2 3 LiPo . ESC  
2 3 ,

**3: 5v**  
/ / 5  
8-12 , NiMH NiCd.

**4: 6v**  
/ / 6  
**LiPo , 2- (7,4 ).**

**LiPo**

**!**

**5: 9v**  
/ / 9  
**LiPo , 3- (11,1 ).**

**LiPo**

**!**

**6: 12v**  
/ / 12  
**LiPo , 4- (14,8 ).**

**LiPo**

**!**

**LiPo 4-**  
**Monster Max.**

**8. (Motor Timing)**

/

, /  
 .  
 ,  
 .  
 (NORMAL)

**1:** (Lowest)  
 ,  
 Kv ( / )

**2:** (Normal) ( )  
 ,

**3:** (Highest)  
 , /  
 , /  
 , " " **6000Kv** !  
 .

**9. (Motor Type)**

Castle.

,  
 ,  
 ,

**1:** (Brushless) ( )  
 ( 1: )  
 ,

**2:** (Brushed Reversing)  
 ( 2: )  
 (+) (-)

**3:** (Brushed High Power)  
 ( 3: )  
 "Y" (-)  
 , (+)



(+)

Castle

Castle Creations

ATV

Futaba,

EPA

100 120%.

50/50 70/30 (dead band) 50/50

"turbo lag" (

ESC

ESC 2

Castle

Creations: [www.castlecreations.com/support/faq.html](http://www.castlecreations.com/support/faq.html)

, 9 5 .

E-mail: [support@castlecreations.com](mailto:support@castlecreations.com)

: 913-390-6939

Mamba Max ESC

(1)

Mamba Max

Castle Creations, Inc.:

Castle Creations, Inc.  
 235 South Kansas Avenue  
 Olathe, Kansas 66061 USA  
[www.castlecreations.com](http://www.castlecreations.com)  
 Phone: (913) 390-6939

**1:** / **(Brake/Reverse Type)**  
 1: (Reverse Lockout) ( )  
 2: / (Forward/Brake Only)  
 3: / / (Forward/Brake/Reverse)

**2:** **(Brake Amount)**  
 1: 25%  
 2: 50% ( )  
 3: 75%  
 4: 100%

**3:** **(Reverse Amount)**  
 1: 25%  
 2: 50% ( )  
 3: 75%  
 4: 100%

**4:** **(Punch/Traction Control)**  
 1: (High)  
 2: (Medium)  
 3: (Low)

4: (Lowest)  
5: ( )

**5: (Drag Brake)**

1: (Drag Brake OFF) ( )  
2: (Drag Brake) 10%  
3: (Drag Brake) 20%  
4: (Drag Brake) 30%  
5: (Drag Brake) 40%

**6. (Throttle Dead Band)**

1: - 0,1500  
2: - 0,1000 ( )  
3: - 0,0750  
4: - 0,0500  
5: - 0,0250

**7: (Cutoff Voltage)**

1: (None) ( )  
2: Auto-Lipo  
3: 5V  
4: 6V  
5: 9V  
6: 12V

**8: (Motor Timing)**

1: (Lowest)  
2: (Normal) ( )  
3: (Highest)

**9: (Motor Type)**

1: (Brushless) ( )  
2: (Brushed Reversing)  
3: (Brushed High Power)